

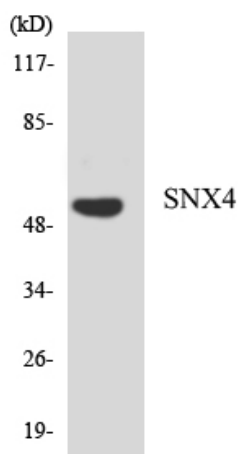


SNX4 Polyclonal Antibody

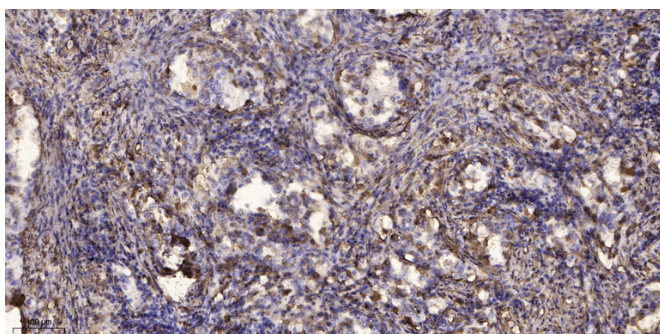
Catalog No	YP-Ab-00734
Isotype	IgG
Reactivity	Human;Mouse;Rat
Applications	WB;IHC
Gene Name	SNX4
Protein Name	Sorting nexin-4
Immunogen	The antiserum was produced against synthesized peptide derived from human SNX4. AA range:191-240
Specificity	SNX4 Polyclonal Antibody detects endogenous levels of SNX4 protein.
Formulation	Liquid in PBS containing 50% glycerol, 0.5% BSA and 0.02% sodium azide.
Source	Polyclonal, Rabbit,IgG
Purification	The antibody was affinity-purified from rabbit antiserum by affinity-chromatography using epitope-specific immunogen.
Dilution	WB 1:500-2000;IHC-p 1:50-300
Concentration	1 mg/ml
Purity	≥90%
Storage Stability	-20°C/1 year
Synonyms	SNX4; Sorting nexin-4
Observed Band	60kD
Cell Pathway	Early endosome membrane ; Peripheral membrane protein ; Cytoplasmic side . Also detected on a juxtannuclear endocytic recycling compartment (ERC). .
Tissue Specificity	Liver,Skin,
Function	function:May be involved in several stages of intracellular trafficking.,similarity:Belongs to the sorting nexin family.,similarity:Contains 1 PX (phox homology) domain.,
Background	This gene encodes a member of the sorting nexin family. Members of this family contain a phox (PX) domain, which is a phosphoinositide binding domain, and are involved in intracellular trafficking. This protein associated with the long isoform of the leptin receptor and with receptor tyrosine kinases for platelet-derived growth factor, insulin, and epidermal growth factor in cell cultures, but its function is unknown. This protein may form oligomeric complexes with family members. Two transcript variants, one protein coding and the other non-protein coding, have been found for this gene. [provided by RefSeq, Nov 2012],
matters needing attention	Avoid repeated freezing and thawing!

**Usage suggestions**

This product can be used in immunological reaction related experiments. For more information, please consult technical personnel.

Products Images

Western blot analysis of the lysates from HeLa cells using SNX4 antibody.



Immunohistochemical analysis of paraffin-embedded human Squamous cell carcinoma of lung. 1, Antibody was diluted at 1:200(4° overnight). 2, Tris-EDTA, pH9.0 was used for antigen retrieval. 3, Secondary antibody was diluted at 1:200(room temperature, 45min).